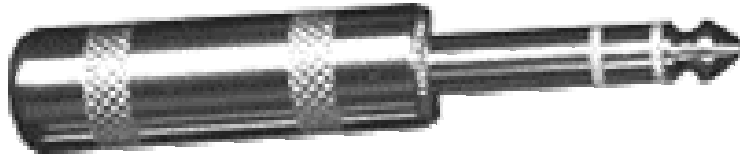


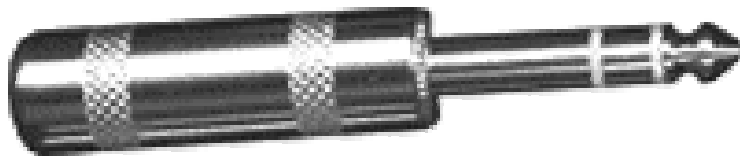
1/4" Balanced Audio, (Tip, Ring, Sleeve)

- Tip = + (hot) (Hi)
- Ring = - (cold) (Low)
- Sleeve = GND (Ground) (Shield)



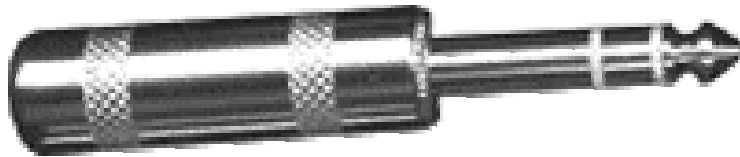
1/4" Headphone, (Tip, Ring, Sleeve)

- Tip = Left +
- Ring = Right +
- Sleeve = GND (Ground) (Shield)



1/4" Insert Point, (Tip, Ring, Sleeve)

- Tip = Send
- Ring = Return
- Sleeve = GND (Ground) (Shield)



RCA (Phono)

- Tip = + (hot) (Hi)
- Sleeve = GND (Ground) (Shield)



XLR (Cannon)

- Pin 1= GND
- Pin 2= + (Hot) (Hi)
- Pin 3= - (Cold) (Low)



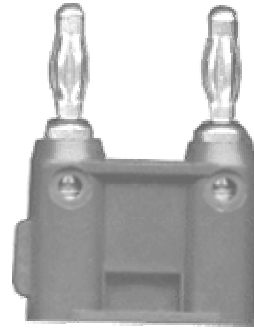
BNC

- Tip= + (Hot) (Hi)
- Sleeve= Ground



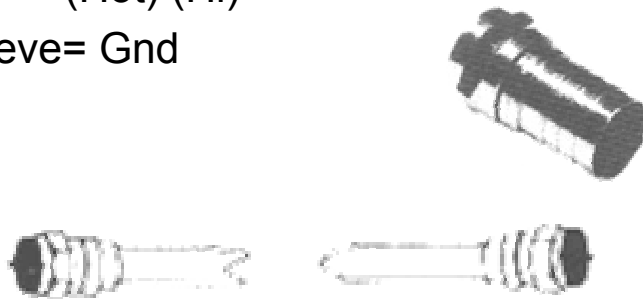
Banana

- Tab = Ground



“F” type

- Tip= + (Hot) (Hi)
- Sleeve= Gnd



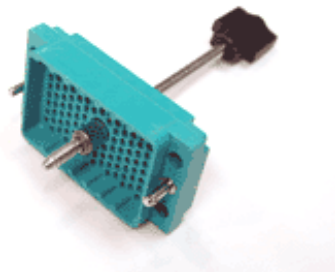
TT (Tiny Telephone)

- Tip = + (hot) (Hi)
- Ring = - (cold) (Low)
- Sleeve = GND (Ground) (Shield)



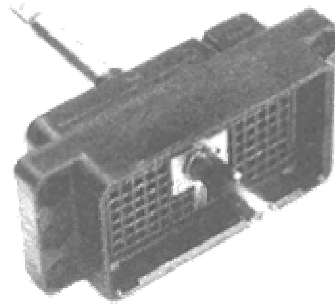
ELCO

- Custom Pinout



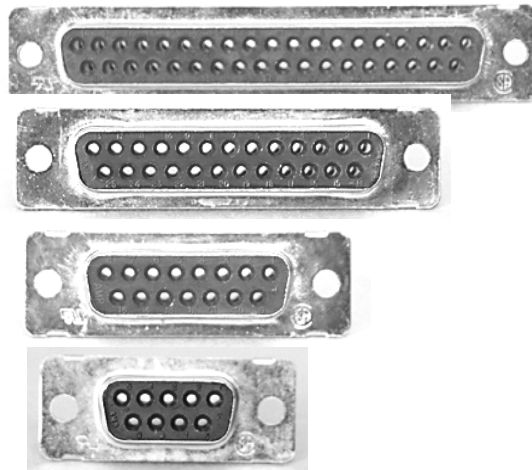
DL

- Custom Pinout



D-Sub (D-9, D15, D25, D37, D50)

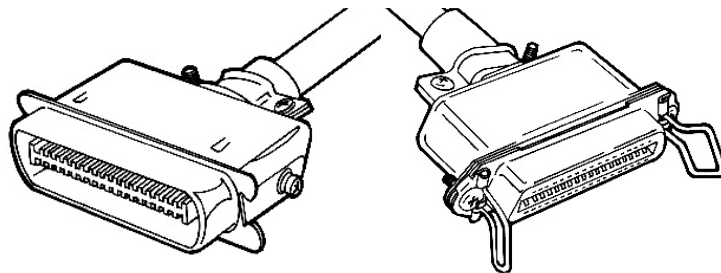
-



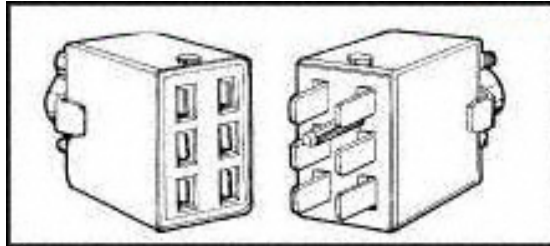
Din, (Mini, 5-pin, 7-pin etc.)



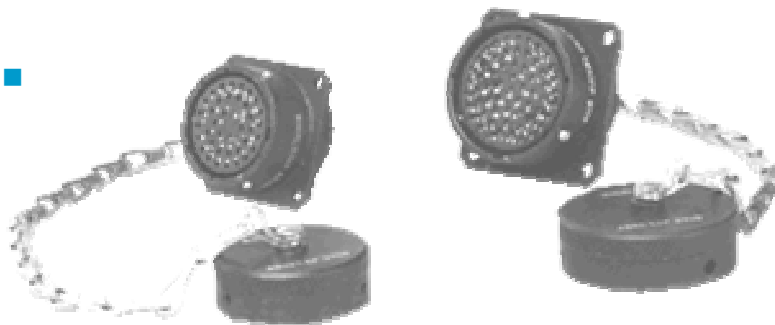
Centronics



Cinch-Jones



Mass



Balanced & Unbalanced Connections

Balanced Input

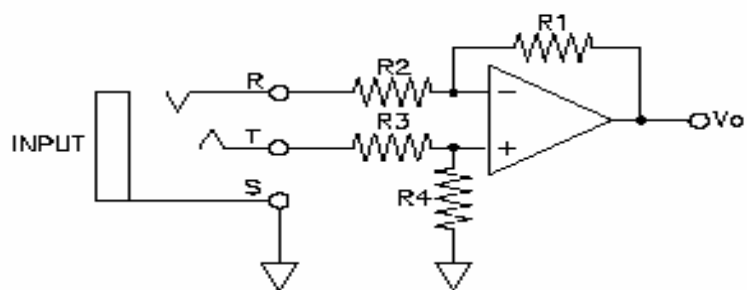


Figure 1. TRANSFORMERLESS
BALANCED INPUT STAGE

Balanced Output

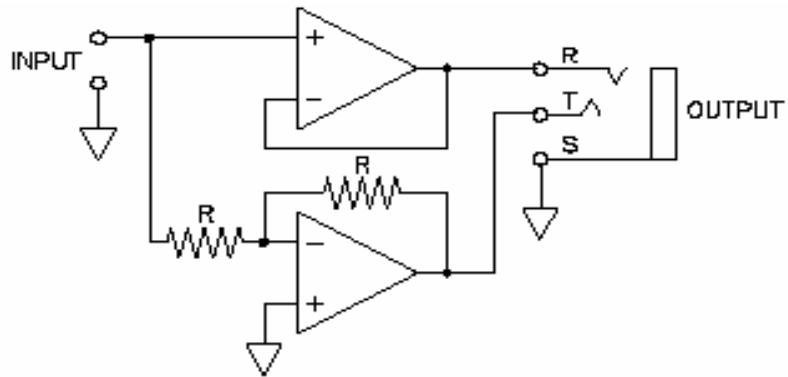


Figure 2. BALANCED OUTPUT STAGE

Floating UnBalanced Output

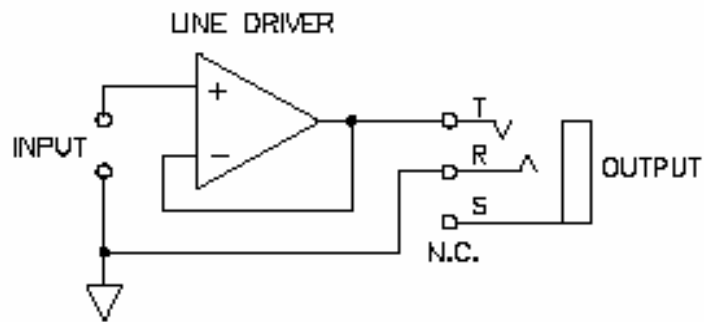


Figure 3. FLOATING UNBALANCED
1/4" TRS OUTPUT

Interconnection

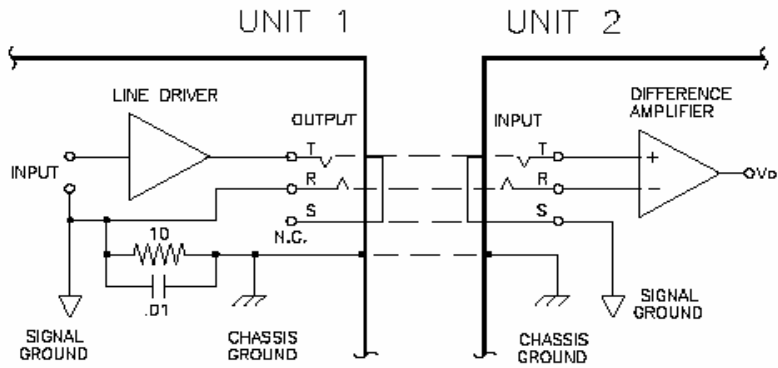


Figure 4. INTERCONNECTION

Interconnection, Bal to Bal No lifting of shields

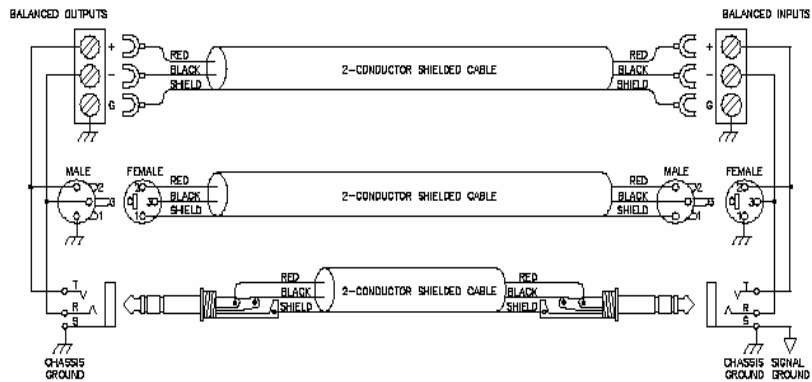


Figure 1a. The right way to do it.

Interconnection Unbal-Bal using a transformer

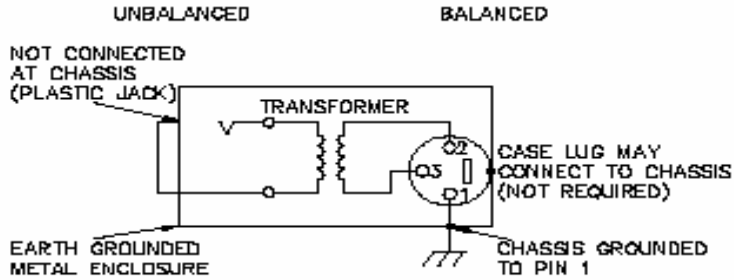
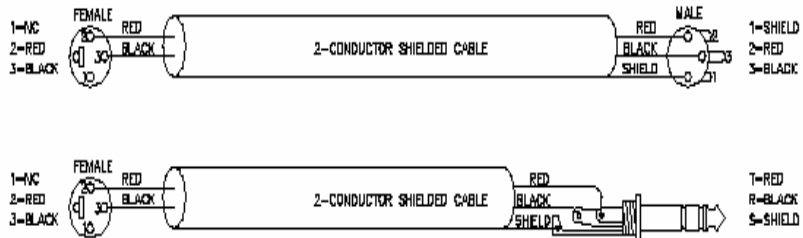
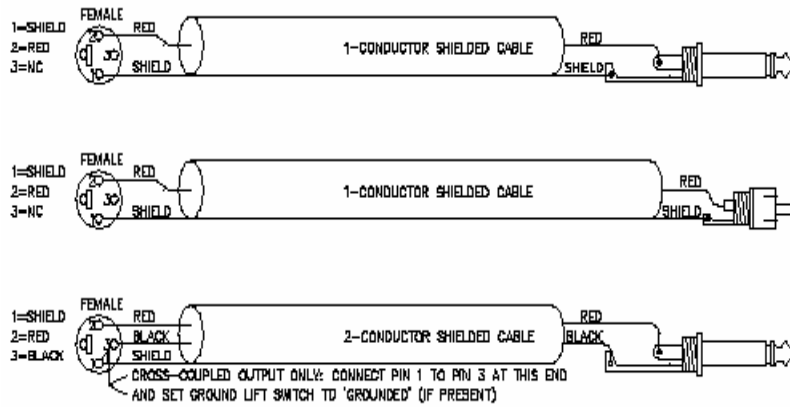


Figure 2. Transformer Isolation

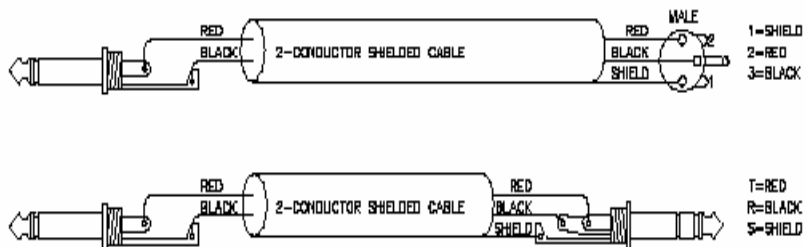
Interconnection, Bal-Bal lifting at the source



Interconnection, Bal-Unbal.



Interconnection, Unbal-Bal



Connecting to an XLR

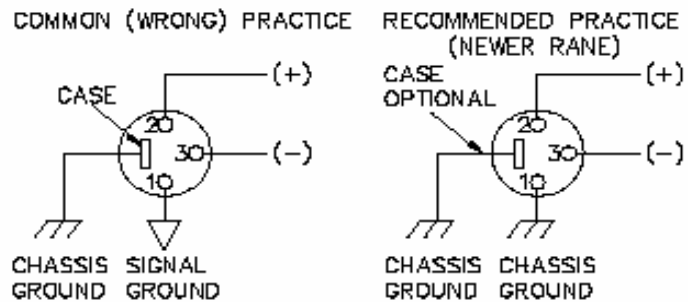


Figure 1b. Recommended practice.

The End

You now know how to get well connected!