

Defense Support of Civil Authorities During Hurricane Sandy

Overview, Observations, & Lessons Learned

Col John Yurcak
United States Marine Corps
Emergency Preparedness Liaison Officer
FEMA Region II

AGENDA

- DSCA Definition, Events, Natural Disasters and CBRNE
- Support Principles, Considerations and Evaluation Criteria
- Reserve Activation
- Posse Comitatus Act
- Immediate Response Authority
- Fire and Emergency Services Authority
- Mission Assignment (MA) Process
- BSIs and ISBs
- Hurricane Sandy Timeline
- Pre-Landfall Mission Assignments
- Federal Military Force Involvement
- Hurricane Impact
- Federal Military Force Response Efforts
- Observations and Lessons Learned
- Questions

Defense Support of Civil Authorities (DSCA)

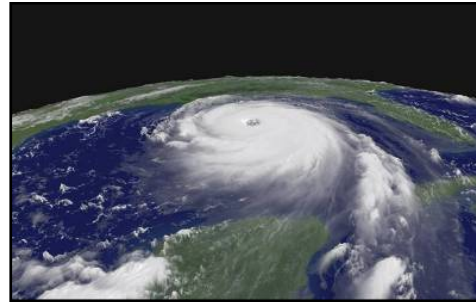
- Defense Support of Civil Authorities (DSCA) is provided when:
 - A **federal agency** requests Dept. of Defense (DoD) assistance or;
 - When DoD is directed to provide assistance to a federal lead agency by the President or the Secretary of Defense
 - NOTE - DSCA does not include those DoD missions (i.e., Homeland Defense [HD]) directed by the President, under Constitutional Article II authority in his role as Commander-In-Chief, to defend the country against threats



DSCA EVENTS



- TERRORISM
- INSURRECTION
- CIVIL DISTURBANCE
- EARTHQUAKE
- FIRE
- FLOOD
- TSUNAMI
- METEOR IMPACT
- CHEMICAL HAZARD
- SPACE DEBRIS IMPACT
- ANIMAL DISEASE
- MASS IMMIGRATION
- NATIONAL SPECIAL SECURITY EVENT



- HURRICANE/TYPHOON
- EXPLOSION
- VOLCANIC ERUPTION
- LANDSLIDE
- MUDSLIDE
- RADIOLOGICAL EVENT
- SNOWSTORM/SEVERE FREEZE
- DROUGHT
- OIL SPILL
- TORNADO
- EPIDEMIC
- AVIATION ACCIDENTS
- POSTAL WORK STOPPAGE

TYPICAL DOD SUPPORT IN RESPONSE TO NATURAL DISASTERS

- Aviation
- Maritime
- Communications
- Force Protection/Security
- Operations & Command Centers



- Medical
- Threat reduction
- Logistics
- Survey support
- Essential services



DSCA SUPPORT PRINCIPLES

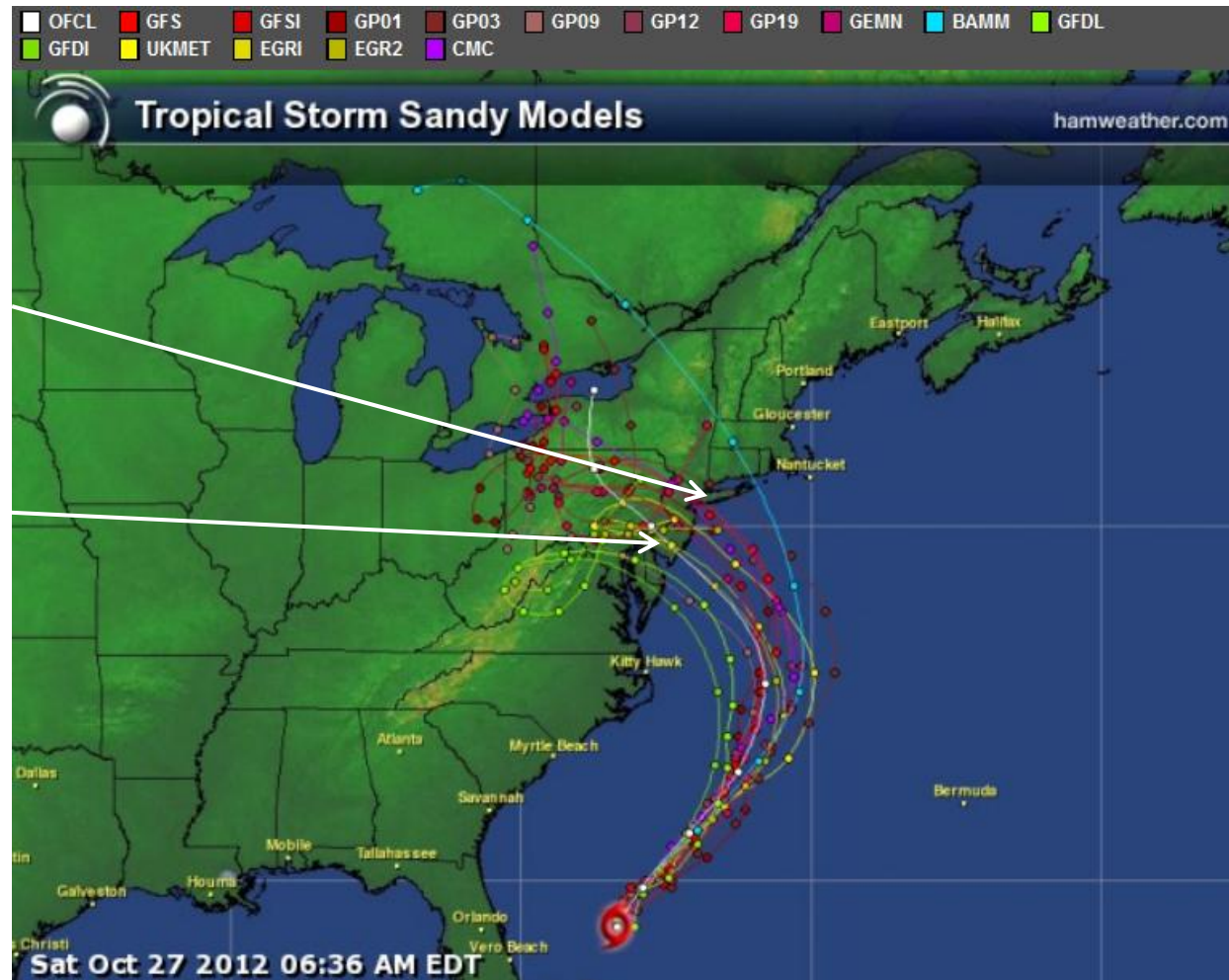
- Local authorities and state resources used first
- Only essential DoD resources provided
- Posse Comitatus Act (PCA) applies to active duty personnel
 - NOTE: Does not apply to National Guard while working under governor's authority
- Avoid competition with commercially-available services or assets

BOTTOM LINE - DoD: “LAST IN, FIRST OUT”

Hurricane Sandy L-72

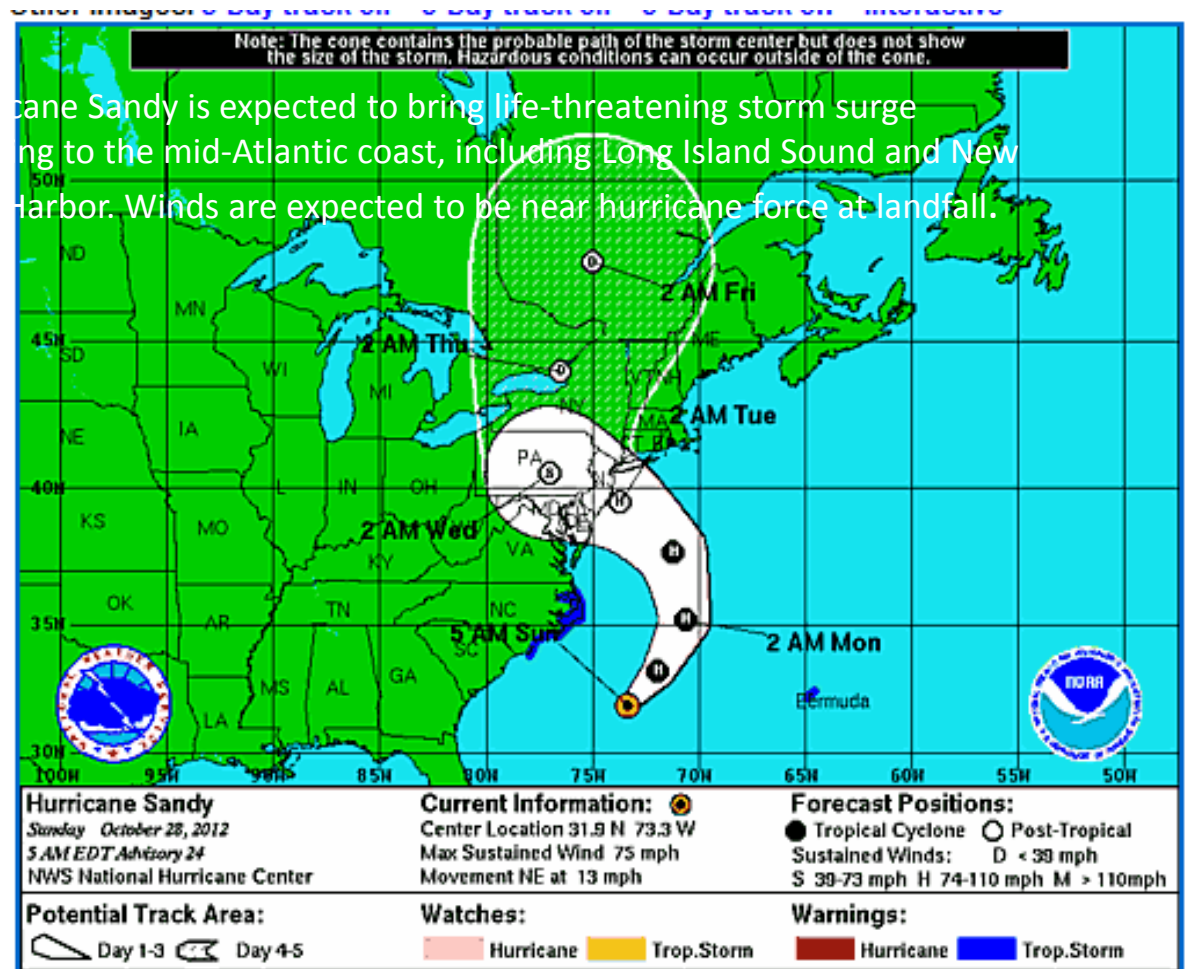
Divergent Models

- US modeling projecting Long Island, NY landfall
- European modeling favoring a Southern NJ landfall



Hurricane Sandy L-48

- NY and NJ Declarations
- Mandatory Evacuations Ordered
- National Guard Mobilizations
- Mass Transit System Shutdown
- Airports and Seaports Closed
- Pre-Landfall DoD Mission Assignments
- NORTHCOM Prepare to Deploy Orders (PTDOs)



Hurricane Sandy Landfall

- Landfall Vicinity
Atlantic City, NJ
- 1100 miles wide
- 90-110 MPH
Winds
- 9-12' Storm
Surge
- Full Moon and
High Tide
- Combined with
Low Pressure
from Midwest



Region II Sandy Damage – By the Numbers

\$62 Billion Estimated Damage

- 126 US fatalities (34 NJ/60 NY)
- 4.9 million customers without power (2.7 NJ/2.2 NY)
- 100,000 homes/businesses destroyed
- 250,000 automobiles destroyed; 3,468 automobiles & 46 boats removed
- 2 oil pipelines damaged
- 7 oil refineries damaged
- 60M gallons water in World Trade Center 9/11 site
- 100s of millions of gallons of sea water pumped out of the subway tunnels
- 3M+ cubic yards of debris removed
- 3,560,192+ meals served

Sandy Inundation Map NY



Breezy Point, NY



Breezy Point, NY



Lower Manhattan Power Outage



Manhattan

14th Street Con-Ed Building



World Trade Center Site Flooding



NYC Metro Flooding



Staten Island, NY Flooding



Sandy Inundation Map NJ



New Jersey Shore Boardwalks Destroyed



New Jersey Shore Flooding



New Jersey Shore Flooding



New Jersey Shore Flooding



Hoboken, NJ Taxi Yard



Atlantic City, NJ Flooded



T-10 Mission Performed

25 OCT 12 to Present

1. Strategic lift (Commodities, Blankets, Power Repair Crews, Federal Teams)
2. Medium/Heavy Lift Rotary Wing
3. Un-watering Operations
4. Civil Air Patrol Imagery
5. DLA Fuel Support and Distribution
6. DLA Food Support
7. DoD Planning Assistance
8. DCO/E/U Activation & Support R II, IV, V, VI, VII)
9. Combat Camera (COMCAM)
10. BSI/FTSA Establishment (JB MDL, FT Hamilton, USMCR Brooklyn)

Strategic Lift California Power Line Crews



Strategic Lift Seattle Power Repair Crews



DLA Fuel Delivery



Un-Watering Ops

401st QM Co – Breezy Point. NY



Un-Watering Ops

USAF Pump Units – Rockaways, NY



Un-Watering Ops

USMC, 8th Engineer Support Bn – Rockaways, NY



Debris Removal

USMC, 8th Engineer Support Bn – Rockaways, NY



Pier Repair, Hoboken, NJ - Naval Expeditionary Combat Command, Little Creek, VA



