

# General Instructions for Running MATLAB GUIs

## INTRODUCTION

This document provides general instruction on running the MATLAB GUIs.

## REQUIREMENTS

1. MATLAB 6.5 or 7.0. If neither program is installed on your computer, download and install the MATLAB Runtime Engine.
2. A screen resolution of 1024 x 768 is recommended.

## RUNNING THE GUIs

1. Download the .zip file for the GUI of interest.
2. Uncompress the .zip file, using WinZip or a similar utility.
3. The .zip file should uncompress to a folder, which will contain all of the files needed to run the GUI, along with the GUI documentation. Check the documentation for a list of the necessary files and make sure they are all present.
4. If using MATLAB: Open MATLAB, and set the working directory to be that which contains the GUI files. To set the working directory, click the "... " button, indicated with the red circle in Fig. 1.

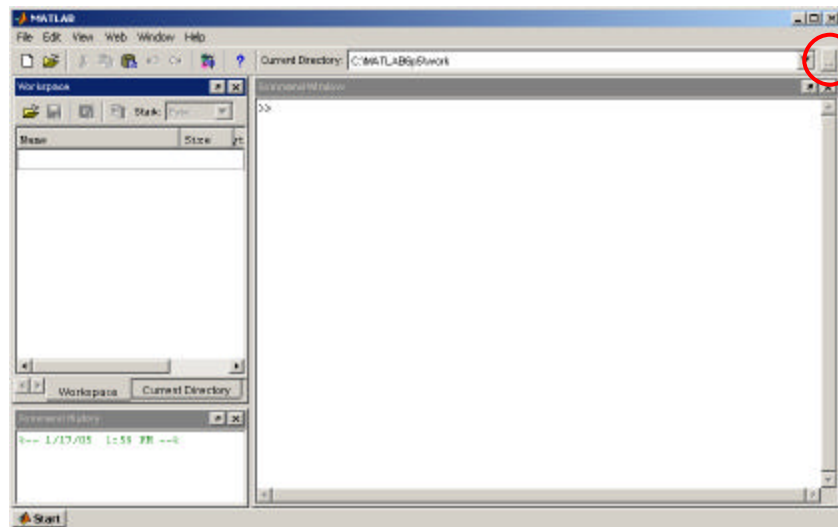


Fig. 1. Setting working directory in MATLAB.

This will open a browsing window, which can be used to navigate to the folder containing the GUI files.

5. To run the GUI, type the GUI start command, which can be found in the individual GUI documentation.

6. If using the MATLAB Runtime Environment: Once the runtime environment is installed, click on the GUI exe file and it will run.